

# Active Photo Viewer Manual

About Active Photo Viewer .....	1
Features .....	2
Creating the Photo Viewer.....	4
Editing the Photo viewer.....	8
Reference.....	11
FAQ .....	12

## About Active Photo Viewer



Create the **ultimate virtual tour** with an amazing Flash Photo Viewer.

### Power to your users

Use large photos with many details and let the user explore them by giving them full control! Active Photo Viewer allows users to pan and zoom across your detailed photos for a great experience.

### Instant virtual experience

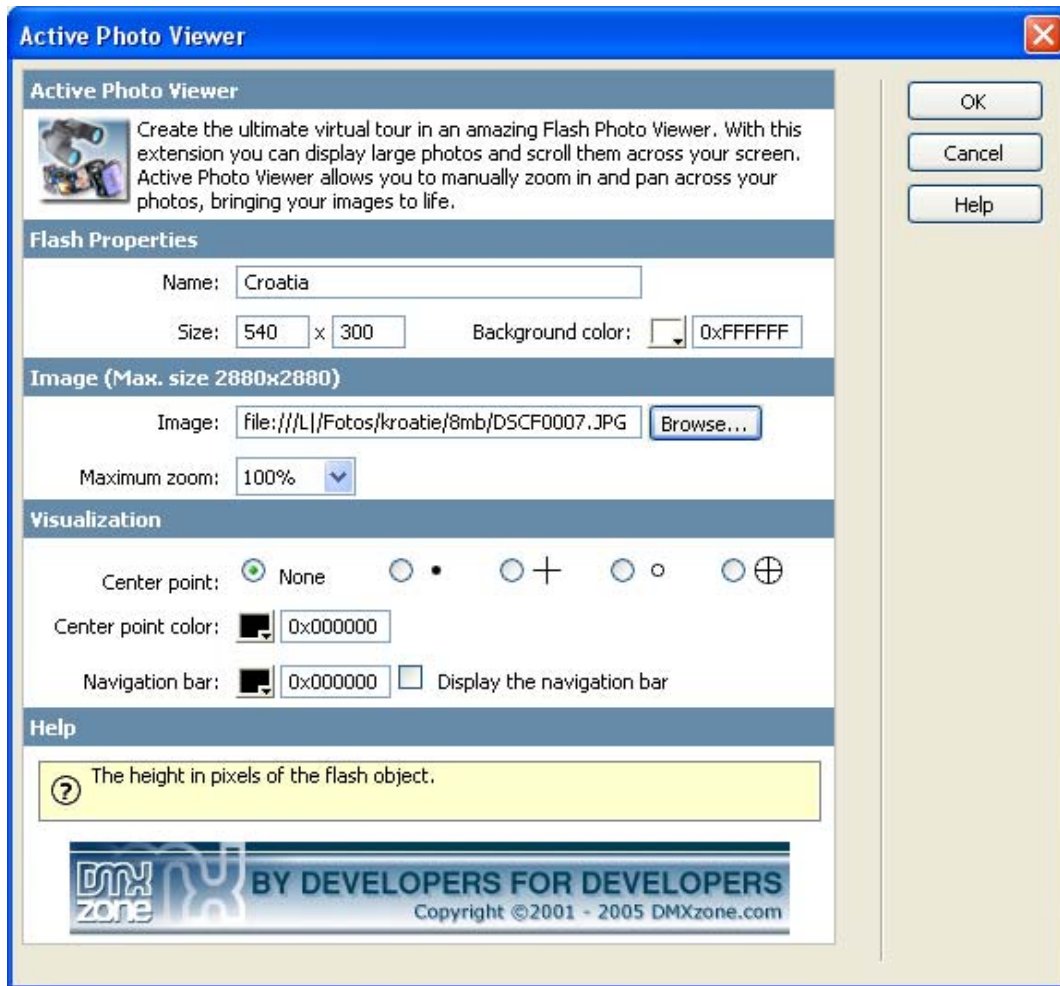
This photo viewer enables people to **interact** with your work, so that they can look around, zoom in and out and look up and down - all of which creates a sensation of virtually **being there!**

### Customize your Photo Viewer

The extension allows you to create and **customize** your viewer within a few clicks in Dreamweaver; choose the options you want such as zoom factors and colors so that the viewer integrates completely with your site.

## Features

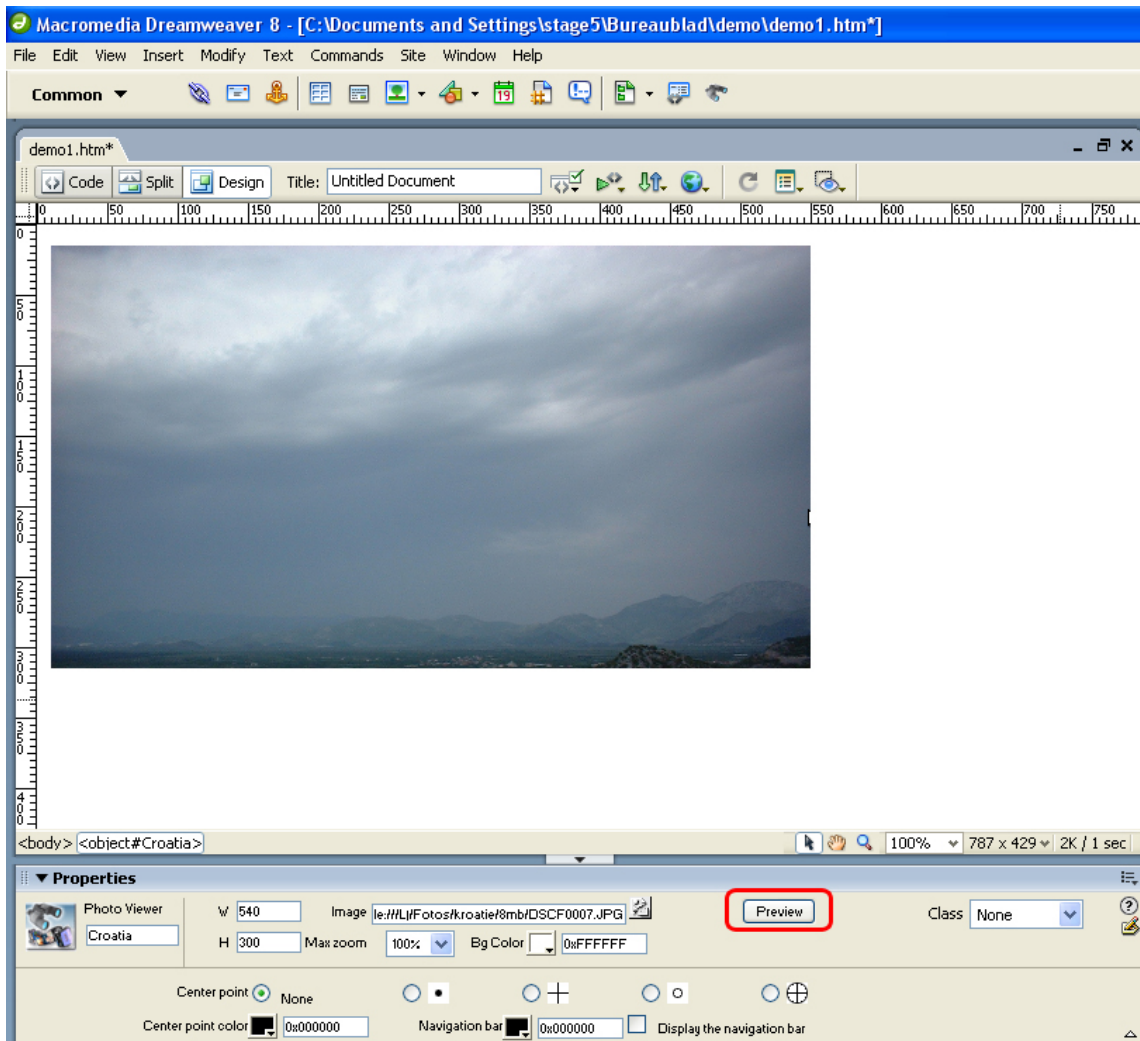
- Amazing user experience
  - The photo viewer allows you to manually zoom in, out and pan across your photo.
- Fully integrated in Dreamweaver;
  - interactive dialog in Dreamweaver with all the options you'll need;



- an inline property inspector so that you can easily change visual options later on




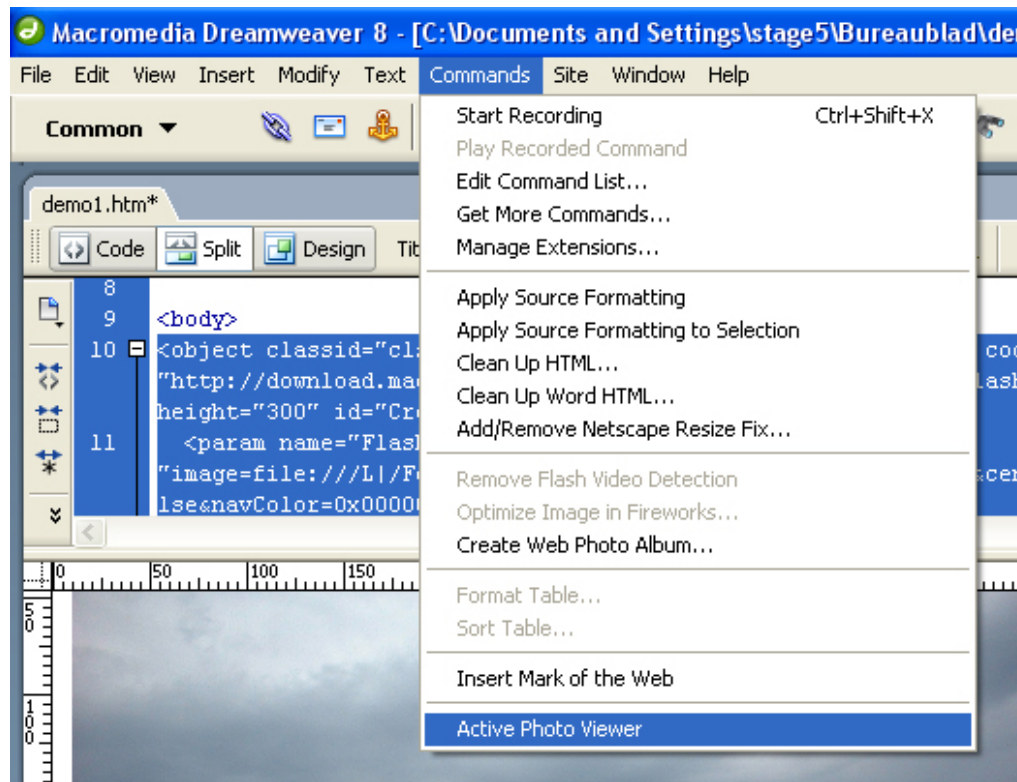
- Live preview in Dreamweaver:
  - With a single click on the preview button in DW you can see within Dreamweaver itself how great your photos look in the viewer!



- Customize your own interface by changing the colors and the **Center point**
- Viewer loads instantly (less than 15Kb)
- Cross platform (requires Flash 7 or higher).

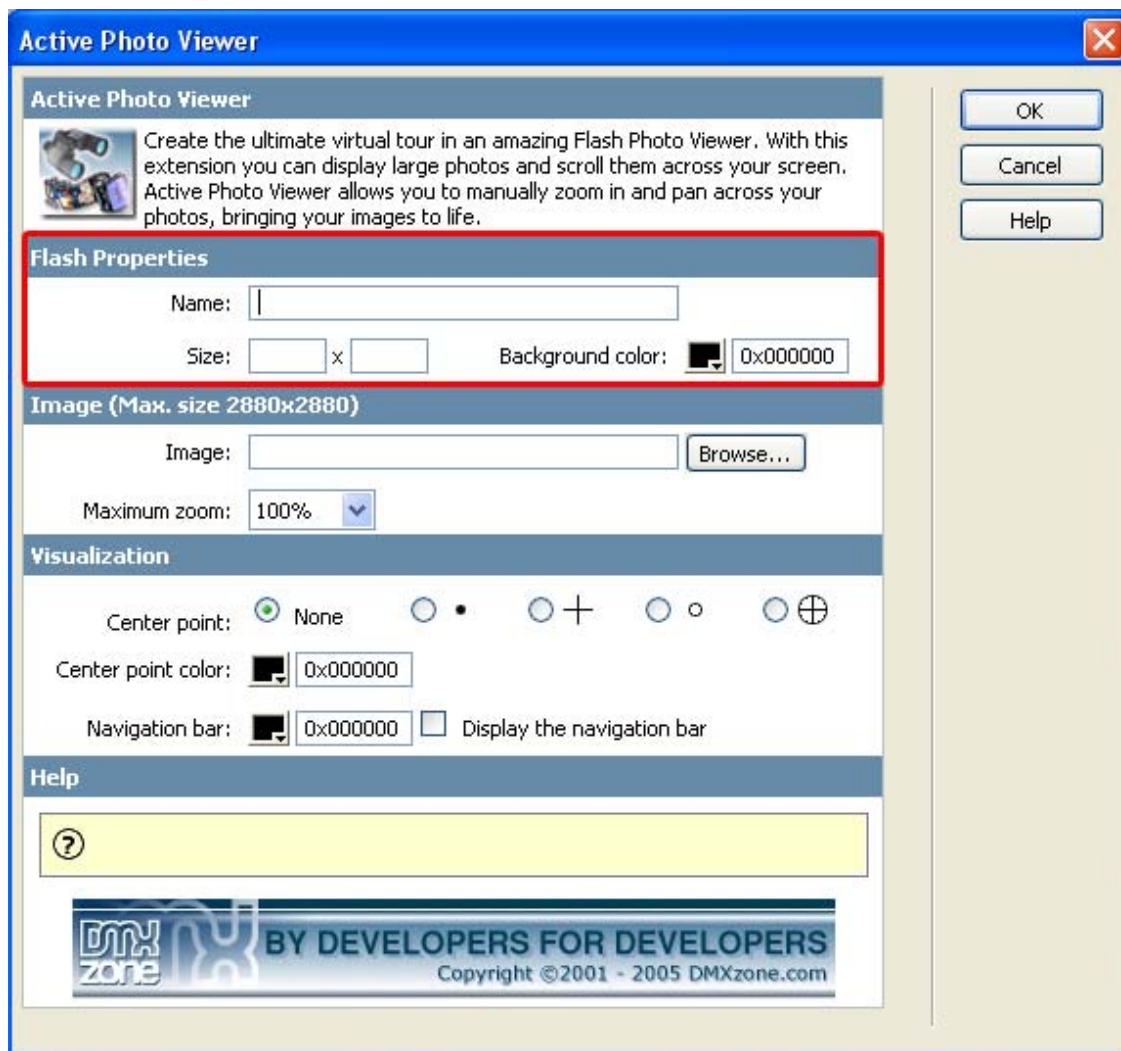
## Creating the Photo Viewer

Before you start, define your site in Dreamweaver. [This page](#) shows you how to define your site. Start the extension by clicking on the **Commands** menu in Dreamweaver and choosing the **Active Photo Viewer** option. Or by pressing the  icon in the object pallet.



A new dialog will appear, we'll start by filling in the **Flash Properties**.

First we'll fill in the name. Then we enter the **Size** of the photo viewer. After that we can select the background color that is shown behind the photo (the background is only visible when the photo is being loaded in the viewer).



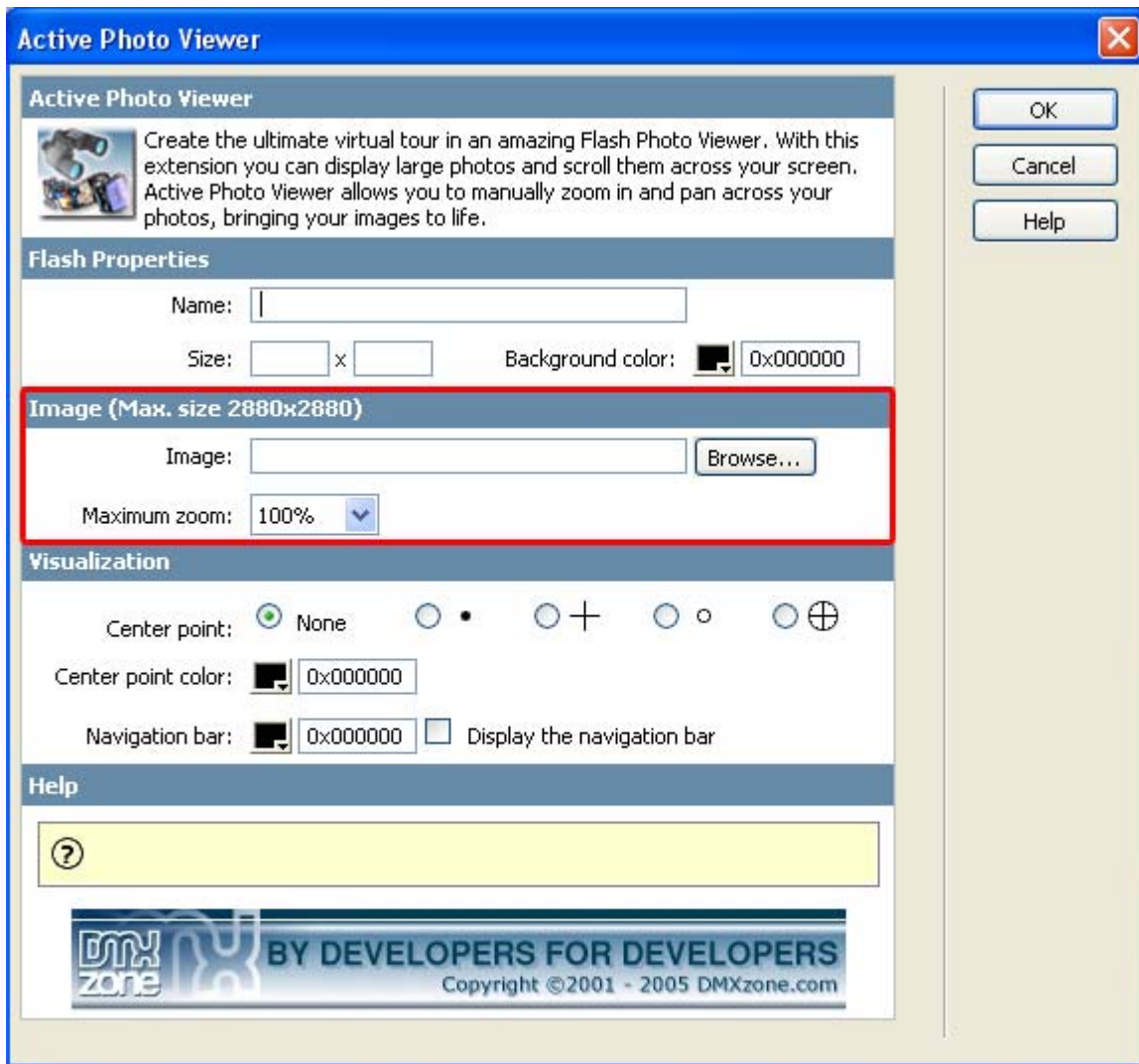
Let's fill in the **Image** fields. First we select the image that we want to display by pressing the **Browse...** button, note that the maximum image size is 2880 by 2880 pixels.

Select the **also create a low quality version** checkbox if you want to display a small version of the photo first while the large photo is still loading (recommended for low bandwidth connections).

With the **Maximum zoom** option you can determine how many times a user can magnify the photo. If you experience problems with the maximum zoom value of 800% (8 times) please try a lower setting.

Lets fill in the **Visualization** options. If you like a **Center point** in the middle of your viewer you can select one of the four **Center points** and define the **Center point color**.

After that you can choose if you want to display a navigation bar and change the **Navigation bar** color.



Press **OK** and **press f12** to preview and **save**. That's it you've created **your own photo viewer!**

Note: If your site is on a remote host, you have to upload the HTM and SWF and the folder with the photos to your server.

Below is an example;



## Editing the Photo viewer

In this chapter we're going to edit the properties of the Active Photo Viewer using the property inspector of Dreamweaver. Click on the Flash object in the design view to display the properties of the photo viewer. Below is a screenshot of the property inspector.



The Flash ID name is displayed at the left side of the screen.

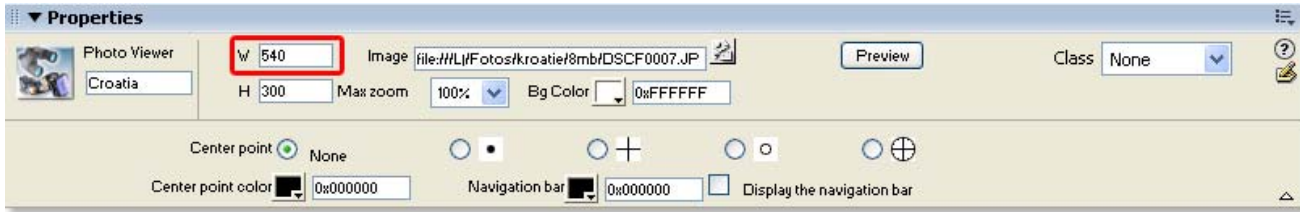


You can view your changes by pressing the preview button;





You can also change the width and height of your photo viewer dynamically by changing the width and height fields;



Let change the **Max Zoom** to a lower value;

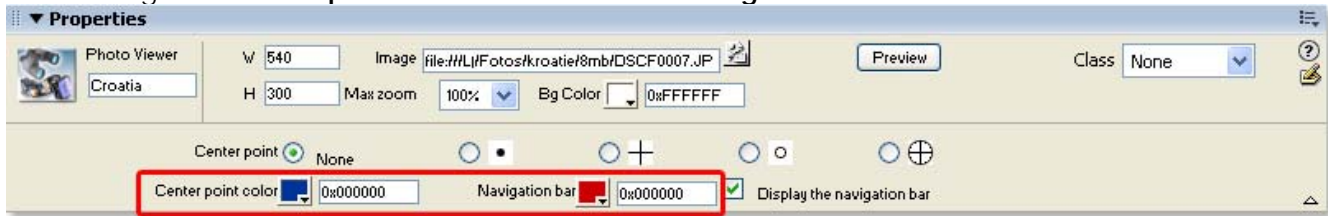


As you can see you cannot zoom in as much as you used to.

Lets adjust the **Center Point**;



Let's change the **Center point color** to blue and the **Navigation bar color** to red.

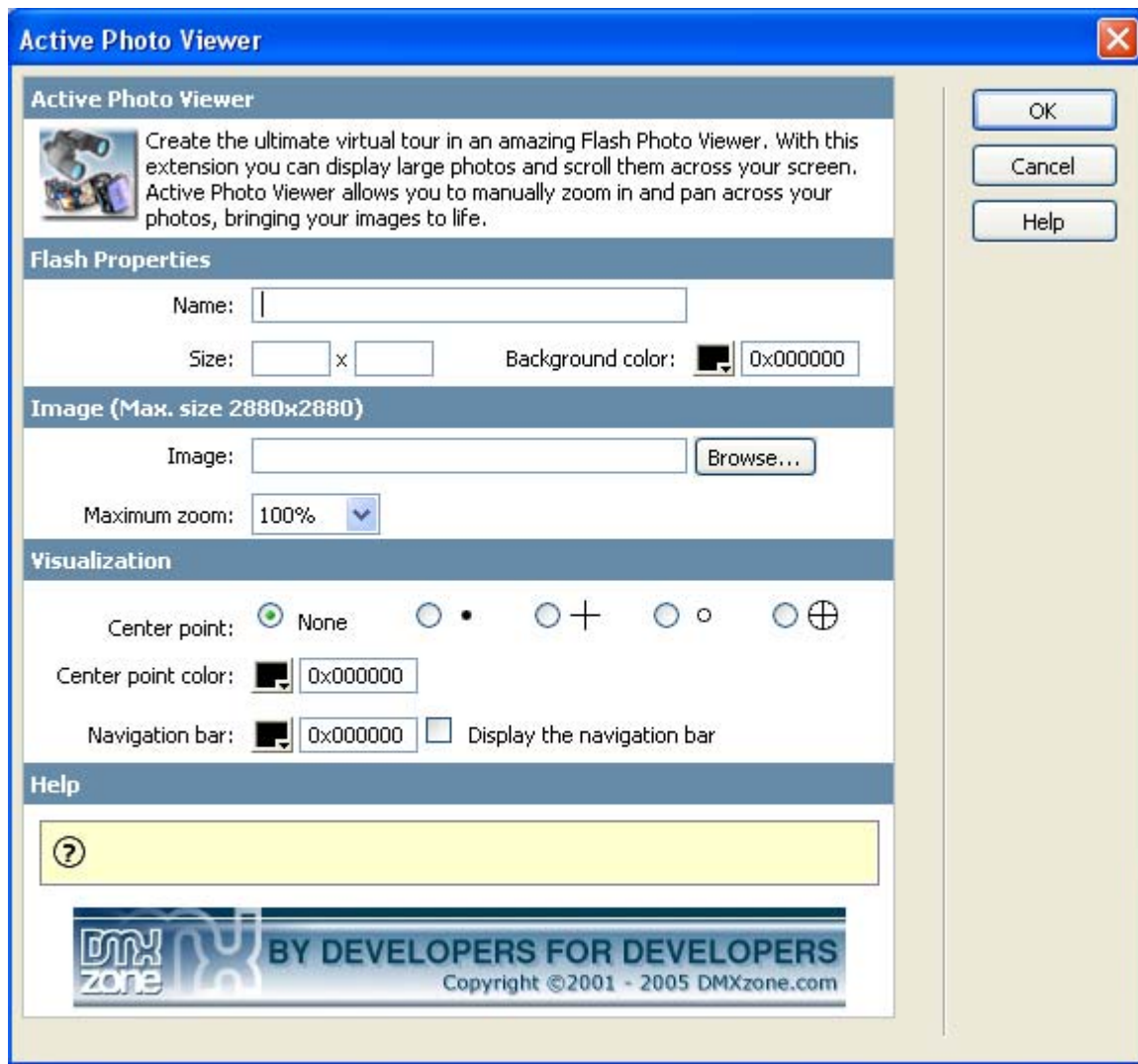


If you want to display the navigation bar make sure that the checkbox is selected.



This concludes our tutorial. We've shown you how to use our extension and we hope you'll enjoy it!

## Reference



In this paragraph we give a short overview of the features of the Active Photo Viewer extension;

- Name: Use this field to specify an unique name for the photo viewer.
- Size: Enter the width and height in the Size fields to specify the size of your viewer.
- Background Color: Use this property to change the background color. You can use the color picker or enter a hexadecimal color value.
- Image: select the image that you want to display by pressing the **Browse...** button
- Maximum zoom: With this option you can determine how many times a user can magnify the photo. If you experience problems with the maximum zoom value of 800% (8 times) please try a lower setting.
- Center Point: a focus point, you can select one of the four Center points
- Center Point color: defines the color of the focus point.
- Navigation bar: You can enable or disable the navigation bar that let's you zoom in and pan across your image, you can also change the navigation bar color.

## FAQ

**Q: I changed a parameter but the change is not visible at my live site.**

A: Make sure you've deleted your browser cache.

Here is a link that shows you how to do this for internet [explorer 6](#).

Here is a link that shows you how to do this for [other browsers](#).

**Q: My photo viewer says it is missing a file**

A: You need to upload the ActivePhotoViewer.swf file and the photo that you use for your viewer to your server

**Q: I want to display a background image**

A: Set the wmode parameter in the Flash movie to transparent, on [this page](#) there is an explanation on how to do it. Other values for the wmode parameter are explained [here](#).

**Q: My photo viewer doesn't display my photo**

A: Please make sure that the page of your photo viewer is saved in the site that is defined in Dreamweaver to prevent path problems.

**Q: Where can I find more information on Active Photo Viewer?**

A: You can find more information on the Active Photo Viewer at <http://www.dmxzone.com/go?11090>.

**Q: When I zoom my image disappears, how can I fix this?**

A: If you experience problems with the maximum zoom value of 800% (8 times) please try a lower setting.

**Q: When panning I cannot view the entire image**

A: The maximum image size supported in Flash is 2880x2880 please downsize your image.